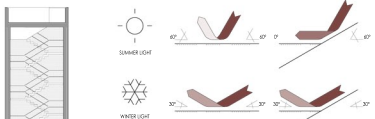


# HISALYT "CERAMIC" CHAIR PAVILION DESIGN IN THE BIENNALE OF VENICE

COMPETITION SECOND EDITION

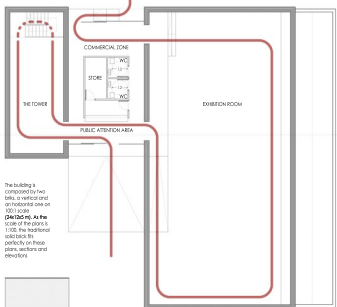


## TRANSFORMING SOUTHERN LIGHT IN NORTHERN LIGHT

In the 80's there was an important exhibition in New York called "Northern Light". It can clarify what the northern architecture was in the beginning of the 21st Century. In those years, the Northern architecture is described as a reaction against modern and clarity of XIX Century, comprehensive research of chronology, materials and layer roles.

We can find a nice relationship between the Northern Architecture and Venice: the Orto dei Franchi town hall. The courtyard access is a descendant way, where in the beginning you can just see the water but gradually you can make out the slope of the stairs bigger and finally the sky. This topic was taken for Orto dei Franchi town hall in Venice. But what was also interesting in this building is the reflected light from the water to the courtyard.

This nice effect is much more effective with the northern light because of the reflection angle in the water. First of all we are transforming the southern northern light by a polished metal plane at 30°, that transforms the 30°-45° light direction (in the southern Europe) in 30°-10° in the northern Europe, afterwards we reflect the light in a water street for introducing the moving light in the exhibition room.



The building is composed for two parts, a vertical and an horizontal one at 100% scale.

**Detailing:** At the scale of the plan's 1:100, the traditional building is perfectly on these plans, sections and elevations.

## THE TOWER

**We also looked for another relationship:** The Clock Tower of opposite tower northern building and the Clock Tower in the Piazza San Marco. They are landmarks of representative places in the city. The tower of the pavilion is the result of this consideration and the starting idea of building the building on the base of the traditional building (the horizontal and the vertical axis) that confirms the position.

For this huge space we also introduce light in an eye-catching way, playing with some holes in the brick wall for introducing the beams of light from the south face to the north one. We also allow the visitor to go up to the top terrace, to have a nice view of Venice, and, at the same time, we introduce upper light that spreads over the walls.

## THE AESTHETIC TOPIC

**As the pavilion is mainly an exhibition building, some factors must be considered as the visit tour and the exhibition lighting and material aspect.** The visit tour is thought to start in the public attention area, going far to the tower where you adapt the eyes to a lower light, and walking into the exhibition room, where you make a round inside that finishes in the small space, from where you leave the pavilion.

**Because of the exhibitions we cover the south wall with plaster and white painting to create a correct support for the paintings or photographs and we design a lower ledge to place some exhibited objects. For the correct appreciation of them, we use a diffuse natural lighting from the top of the wall, that spreads the light over the supporting wall.**

## FLOOR PLAN 1/100



## ELEVATION 1/100

0 1 2 3 4 5 6m

